



Printrak Latent Station

Complete Solution for Centralized Latent Print Processing

The Printrak Latent Station is a complete solution designed to provide latent print examiners with mission critical information needed to solve cases and take criminals off the streets. Trusted Printrak software, a PC, monitor, camera, and an FBI certified scanner allow users to capture, encode, and submit latent fingerprints and palmprints with ease and precision. With complete palmprint processing functionality, latent examiners can search a general section of the palm (upper, lower, and writer's palm) or specify an area of the palm to examine such as the interdigital area or a particular 1" by 1" location within the image.

With the Printrak Latent Station, latent print experts can conveniently track cases through the system, perform quality checks, and verify search results. The Latent Station provides a variety of image enhancements, including Gabor filtering and pattern removal, and records every step of the enhancement process. With an integrated 3D viewing tool, latent examiners have the ability to examine images from every angle and view unique print information and detail, such as pores, in order to improve minutiae placement and matching.

The Printrak Latent Station is a flexible, advanced solution that includes a multitude of key features to simplify and streamline latent processing. The Case Management screen provides a variety of functions in one large viewing area to alleviate the need to click through numerous menus. The solution also supports the capture of latent prints from a variety of sources and formats while the database allows for the entry and retrieval of a configurable set of demographic data to create targeted lists of suspects. The ergonomically positioned camera and lighting allow for the capture of latents directly from evidence, saving agencies valuable time and resources. With the Printrak Latent Station, latent examiners finally have the right tools and information to solve cases efficiently and accurately.

Only Printrak Latent Station provides you with the ability to:

- Capture, auto-encode, and submit latent images from one central location in a focused environment
- Obtain and store images directly from evidence or a variety of other sources including a high resolution digital camera, scanner, and industry standard digital image formats
- Store up to 1,000 images per case with no limit on the size or quality of the images
- Enhance latent images with three-dimensional encoding tools while tracking all modifications

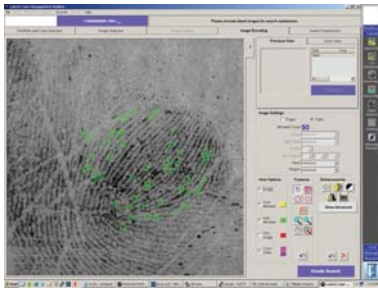
Printrak Latent Station

Complete Solution for Centralized Latent Print Processing

The Printrak Latent Station includes trusted Printrak software as well as specially designed hardware to capture, encode, and submit latent fingerprints and palmprints with ease and precision.



The Case Management screen provides a variety of functions on one screen to alleviate the need to click through numerous menus.



Product Highlights:

- Intuitively capture, encode, and submit fingerprint and palmprint searches at 500 or 1,000 ppi
- Perform 1:1 and 1:N searches of both tenprint and palmprint files with upper, lower, and writer's palmprint processing functionality
- Supports imported JPEG, JPEG 2000, Bitmap, NIST, WSQ, and TIFF files
- Store up to 1,000 images per case, with no limit on the size or quality of the image
- Automated encoding reduces the amount of time required to process each latent
- Includes enhancement features such as brightness, contrast, invert, reverse, and histogram as well as additional features such as Gabor filtering and pattern removal
- Tracks and displays each step of the enhancement process
- View thinned images, auto minutiae, and manual minutiae
- Save AFIS and general crime scene images along with detailed case information using the Latent Case Management Database
- Interface to Printrak BIS as well as foreign system for search
- Multi-language support, including right to left foreign languages
- Excellent image viewing capabilities with continuous zoom
- Latent EXPERT (auto capture of non-minutiae features instead of auto minutiae capture) matching allows for more accurate results
- Identify and label critical similarities between prints using the charting tool
- Easily track cases through the system, perform quality checks, and verify search results

Software Features:

- Case Management screen provides a variety of functions in one area
- Image Encoding screen presents a large viewing area and a variety of image enhancement tools
- Integrated 3D viewing tool facilitates examination of images from every angle and unique print information and detail, such as pores, to improve minutiae placement and matching
- View thumbnail images for a variety of possible hits, providing for a more efficient workflow
- Integrated Universal Latent Workstation (ULW) application enables submission to the FBI's IAFIS database
- Integrated Adobe Photoshop and LumenIQ 3D Viewer software for advanced enhancement and encoding capabilities
- Includes a full Review Station software package

Hardware Features:

- RoHS compliant
- FBI Appendix F certified tenprint and palmprint flatbed card scanner (500 ppi or 1,000 ppi)
- FBI Appendix F certified or Twain driver support
- Mounted camera for capture with back lighting and adjustable side lighting allows users to position evidence directly under the camera
- Ergonomically designed workstation includes a center desk, side scanner table, side camera table, and a chair for a focused latent processing environment



MorphoTrak
SAFRAN Group

www.morphotrak.com
e-mail: biometrics@printrak.com
+1 888 493 3590 +1 714 238 2000